

MONTHLY MEMBERSHIP PROGRESS REPORT

LOCATION WASHINGTON

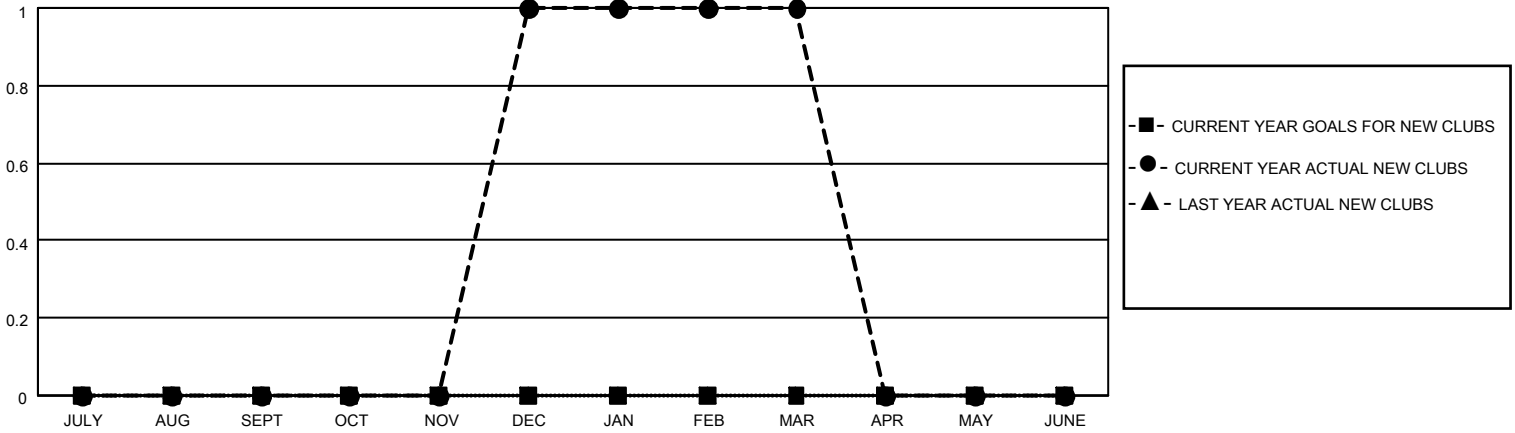
District 19 C

Results as of: 3/31/2022

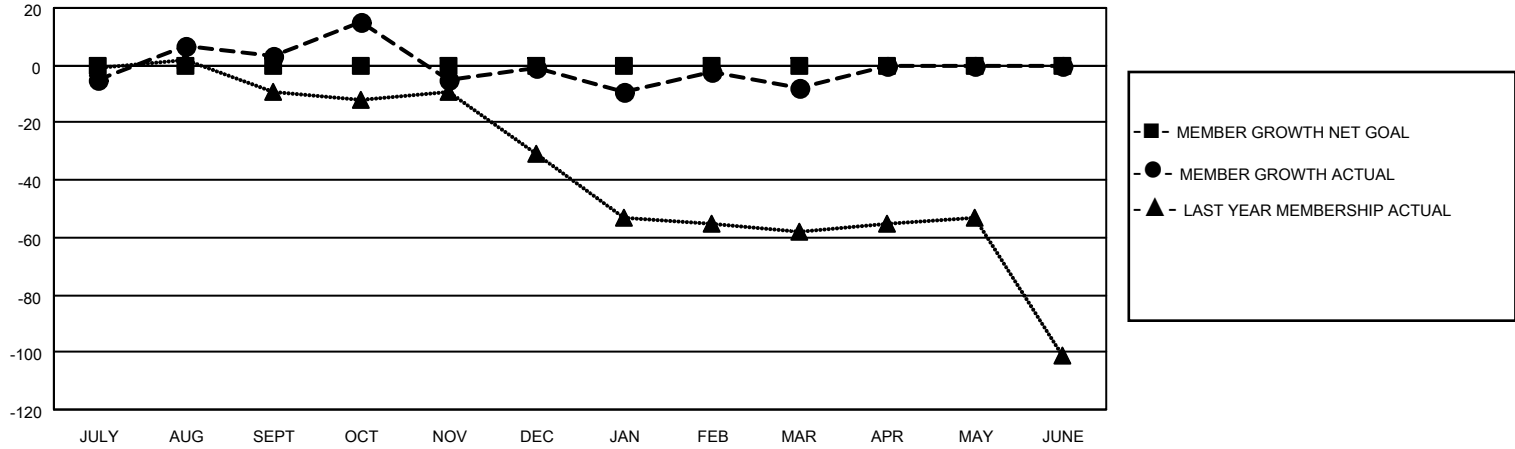
Clubs			
RESULTS FOR 2021-2022			
QUARTER	NEW CLUB GOAL	NEW CLUBS	DROPPED CLUBS
JULY/AUG/SEPT	0	0	0
OCT/NOV/DEC	0	1	1
JAN/FEB/MAR	0	0	0
APR/MAY/JUNE	0	0	0

Members			
RESULTS FOR 2021-2022			
QUARTER	MEMBER GROWTH NET GOAL	MEMBER GROWTH ACTUAL	DROPPED MEMBERS ACTUAL (including transfers)
JULY/AUG/SEPT	0	47	36
OCT/NOV/DEC	0	62	62
JAN/FEB/MAR	0	27	33
APR/MAY/JUNE	0	0	0

GOALS AND ACTUAL NEW CLUBS CUMULATIVE



GOALS AND ACTUAL MEMBERS CUMULATIVE



DROPPED CLUBS: 1

32 CLUBS OF 44 ADDED 1 OR MORE NEW MEMBERS

GENDER DISTRIBUTION

MALE	643 (54.40%)
FEMALE	539 (45.60%)
NON BINARY	0 (0.00%)
PREFER NOT TO ANSWER	0 (0.00%)

DROPPED MEMBERS

[CLICK HERE FOR CUMULATIVE MEMBERSHIP DATA](#)

DECEASED	12
CLUB CANCELLED	20
OTHER	99
TOTAL	131

TOTAL FAMILY UNIT MEMBERS 323

FAMILY MEMBERS PAYING HALF DUES 167